

# LUMOSIGNS

Trade Signage Solution



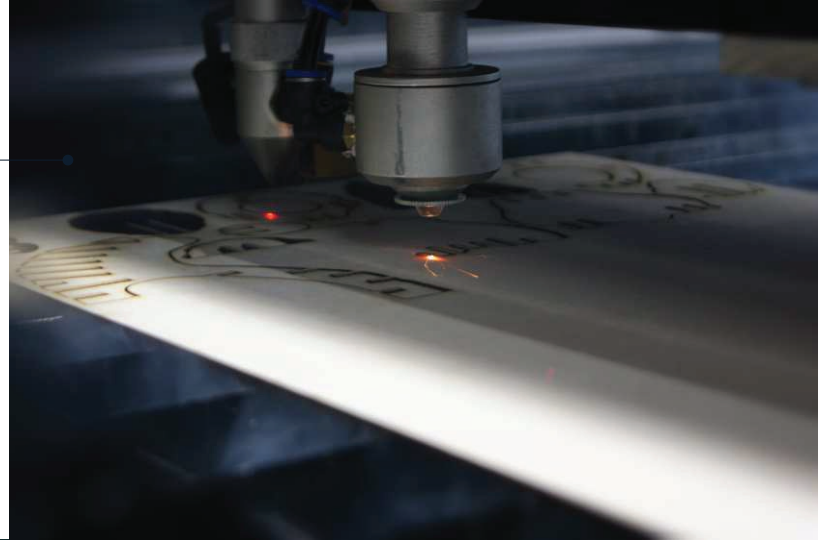
**Indoor and outdoor signage**

## **OUR CAPABILITIES**

Lumosigns is focused on visual marketing manufacturing. The integrated vertical manufacturing chain allows to control all the visual marketing manufacturing processes: from the processing of various materials to the final delivery and installation of the product. The constant focus on daily operational processes and direct communication with the client is the key to offer a trusted partnership service. The current machines and infrastructure allows to manufacture not only serial, but also non-standard and customized products. Manufacturing and storing establishment area- 1200 m<sup>2</sup>

## LASER CUTTING

Laser cutting machine-tools, which are controlled programmatically and created with the „CNC“ base give the opportunity to cut various materials such as: acryl, organic glass, wood and veneer fastly and effectively. There is an opportunity, using our technology, to choose various power modifications and to apply for certain cutting materials and the preciseness of positioning reaches  $< 0,01\text{mm}$ . The working laser cutting machinetool area is:  $1600 \times 2600\text{m}$ . The maximum cutting thickness is:  $30\text{ mm}$  acryl.



## MILLING

Machine-tool, which is operated programatically assures preciseness and can mill various plastics, "PVC", different kinds of compositional materials, glued wood, "LMDP", "MDP", "MDF", "MPP", "OSB" and other rarer materials, which are used in manufacturing. There is an opportunity to process products of size reaching up to  $4300 \times 2050 \times 30\text{mm}$ , with the machinetool technology, which we have.

## AUTOMATIC MULTI SIGN CHANNEL BENDER

Lumosigns recently updated with the full Auto Bending machine. The machine can bend & cut all kinds of materials, like Aluminum Profile, Stainless and Galvanized Steel. Fully automated  $360^\circ$  V-cutting System can make letters of any design. A precise servo control system ensures precision and accuracy of the product. Material specification: thickness aluminum up to  $2\text{mm}$ ; stainless steel up to  $1.2\text{mm}$ .





## WELDING

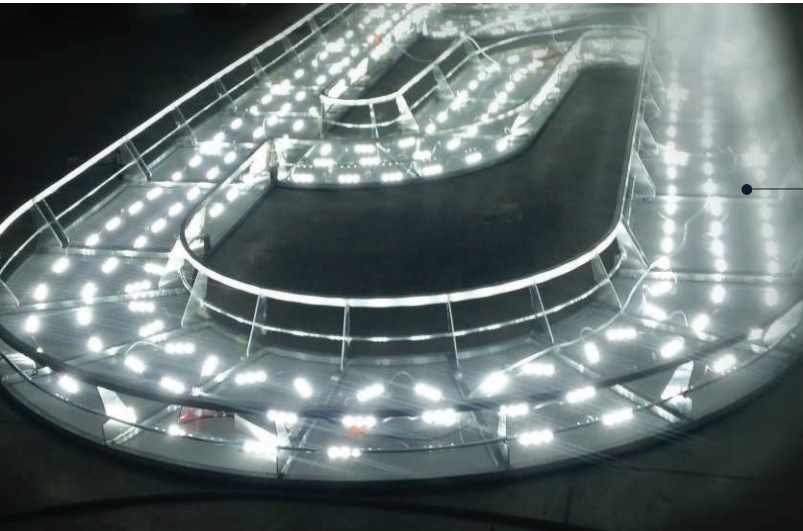
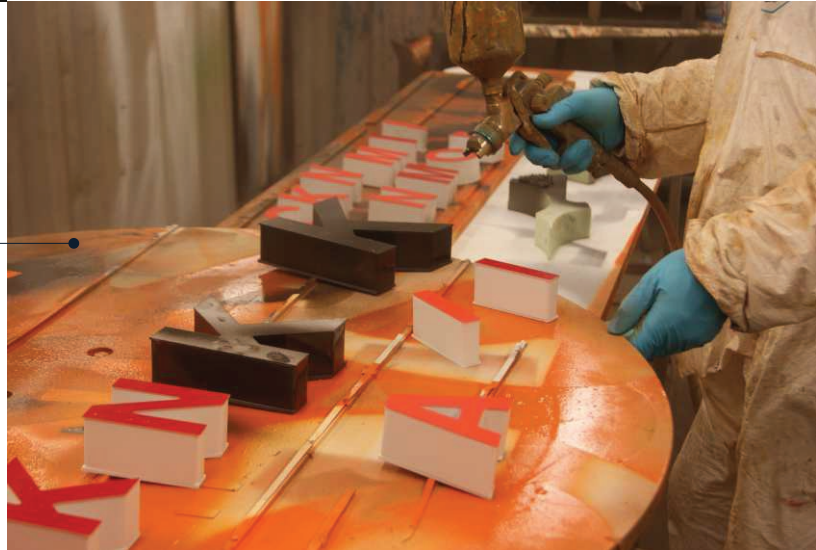
---

The "TIG" welding method is used in visual product construction manufacturing in other words- welding with a non-melting electrode in safety gases. The "TIG" method is used for specific materials (aluminum) and it allows to reach high-quality welding, materials which experience huge loads, are welded carefully.

## PAINTING

---

Various visual marketing products and metal constructions are prepared for painting and are painted by certain client requests. Small and large size constructions are painted in a specially designed painting camera (size: 6x2,44x2,6m).



## LIGHTING INSTALLATION

---

We specialize in visual product lighting and optimize the lighting decisions, that were made by the client, using certified "LED" solutions, that conform to electricity safety requirements. Working together with the supplier, we manufacture and suggest innovative, energy consuming and easily controlled solutions.

# MANUFACTURING

Lumosigns constantly invest in manufacturing infrastructure and new technology. During the manufacturing process hand-work and automatized labor solutions are used, depending on the product specifications. According to the manufacturing infrastructure, we can produce products from different kinds of material: organic glass, "PET", "PVC", aluminum, aluminum compositions and others.



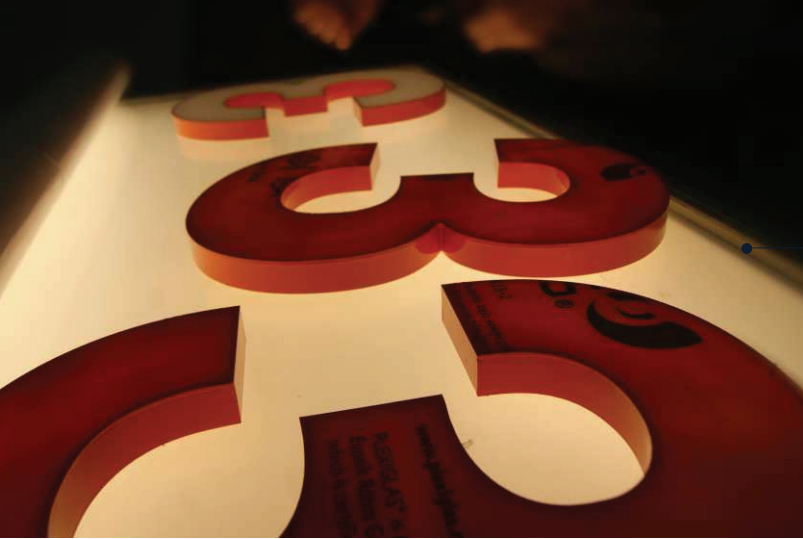
# PLOTTING AND WIDE-FORMAT INK JET PRINTING

When visual product decorating specifications are taken into account, a special drawer cut out or carve various pellicles and other format materials. The drawer has the most advanced, complex algorithms, which help compensate any printing deformations. In order to expand Lumosigns's capabilities, the company has updated with a wide-format printer by MUTOH. New design printer allows to print up to 1620mm width with maximum resolution 1080x1440.

# INSTALLATION

The experienced workers of our company can complete various installment work smoothly at any appointed location.





## TESTING INSURANCE

---

All manufactured products have the companies insurance and are tested for any possible defects. The insurance total is 145 000 euros. We have also made a civic responsibility contract.

## DELIVERY

---

The companies transportation is fully equipped with the necessary tools needed to deliver packed visual products safely.



## DESIGN

---

The signage for any project, large or small, can be a frustrating process. Designers at Lumosigns evaluate the needs of customers and offer a full range of NEEDED services to ensure peace of mind result. With a help of graphic simulation programs, designers can offer 2D, 3D visual simulations. All materials and manufacturing process are documented into a technical specification.

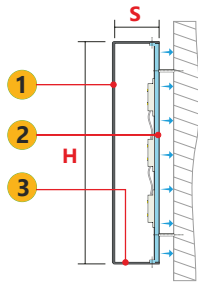


## **ILLUMINATED CHANNEL LETTERS**

It is the classics of advertising signage for almost 100 years. Today's technologies give vast possibilities to embody all clients' wishes and even dreams to come true. Our professional team offers unique design solutions for illuminated channel letters to be not only attractive but also exclusive and effective tool of advertising. Proper design aesthetics and technical solutions of illuminated channel letters will help your advertising message to be visual strong and noticeable in the daylight and night time.



### PROFILE 3

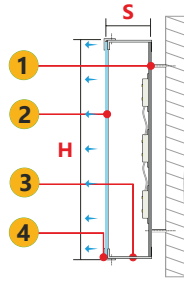


H 200 - 2000 mm  
S 40 | 60 | 80 | 100 | 120 mm

#### Main materials

1	Aluminium	2 mm
2	PMMA	4   5 mm
3	Aluminium	1 mm

### PROFILE 4

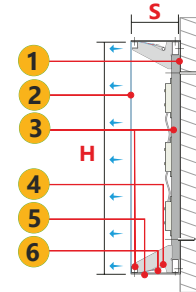


H 1200 - 2000 mm  
S 120 | 140 | 160 mm

#### Main materials

1	Aluminium	2 mm
2	PMMA	3   4 mm
3	Aluminium	1 mm
4	Aluminium	2 mm

### PROFILE 4S

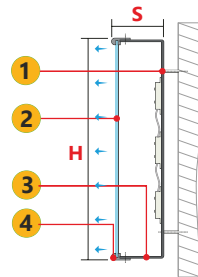


H from 2000 mm  
S 200 mm

#### Main materials

1	Composite   Aluminium	3   2 mm
2	PVC tent	
3	Aluminium profile	40x20   20x20 mm
4	Rod	10 mm
5	Aluminium	2 mm
6	Tensions	

### PROFILE 5

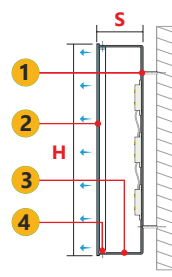


H 300 - 2000 mm  
S 60 | 80 | 100 | 120 | 140 | 160 mm

#### Main materials

1	Aluminium	2 mm
2	PMMA	3 mm
3	Aluminium	1 mm
4	Elkamet	25 mm

### PROFILE 5S

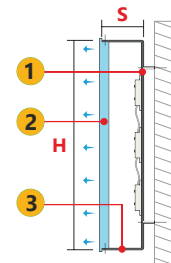


H 250 - 2000 mm  
S 40 | 60 | 80 | 100 | 120 | 140 | 160 mm

#### Main materials

1	Aluminium	2 mm
2	PMMA	3   4 mm
3	Aluminium	1 mm
4	PVC   PMMA	3 mm

### PROFILE 6

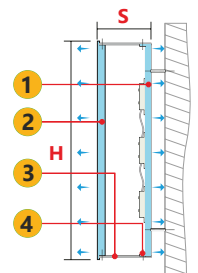


H 100 - 1000 mm  
S 40 | 60 | 80 | 100 mm

#### Main materials

1	Aluminium	2 mm
2	PMMA	8 mm
3	Aluminium	1 mm

### PROFILE 6+3

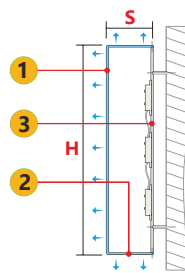


H 200 - 1500 mm  
S 40 | 60 | 80 | 100 | 120 mm

#### Main materials

1	PMMA	4 mm
2	PMMA	8 mm
3	Aluminium	1 mm
4	PVC   PMMA	3 mm

### PROFILE 8

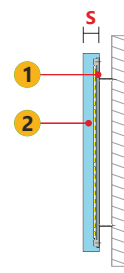


H 100 - 1000 mm  
S 40 | 60 | 80 | 100 mm

#### Main materials

1	PMMA	3   4 mm
2	PMMA	2   3   4 mm
3	Aluminium	2 mm

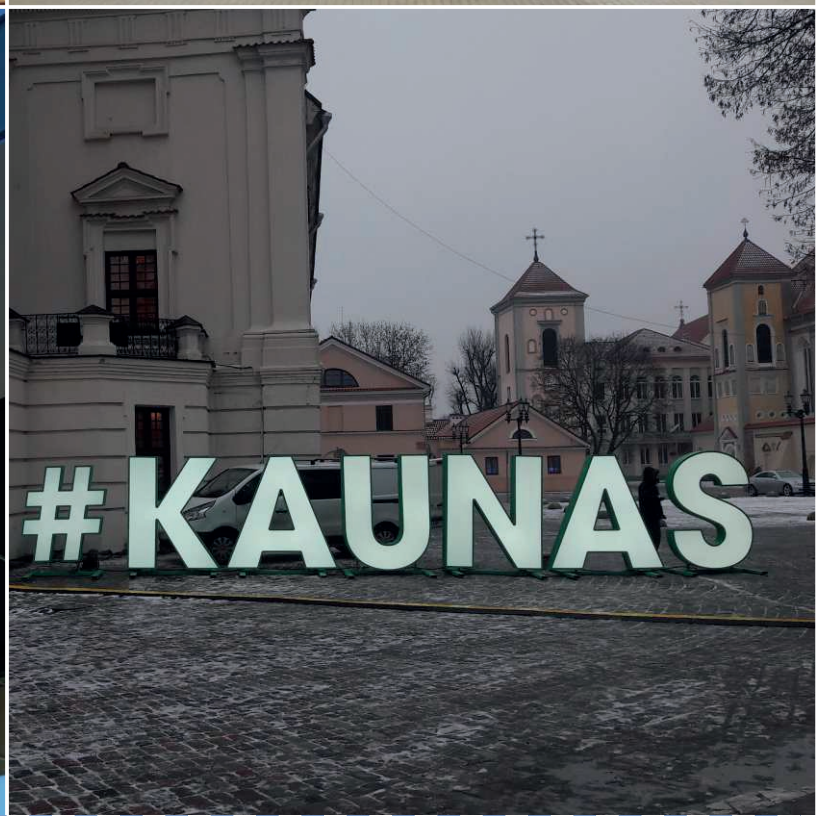
### PROFILE 30



S 30mm

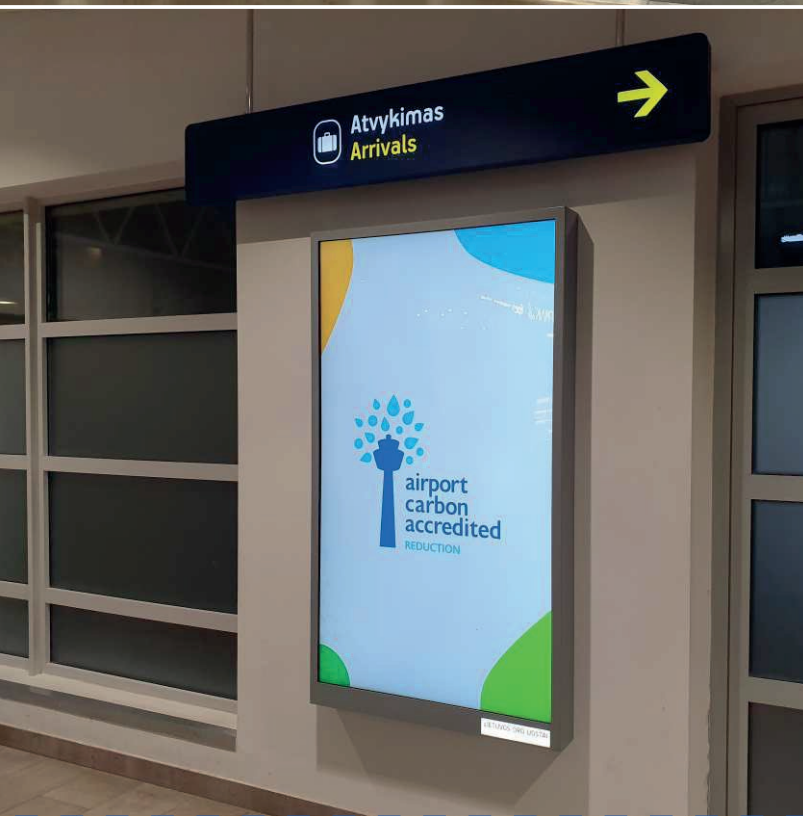
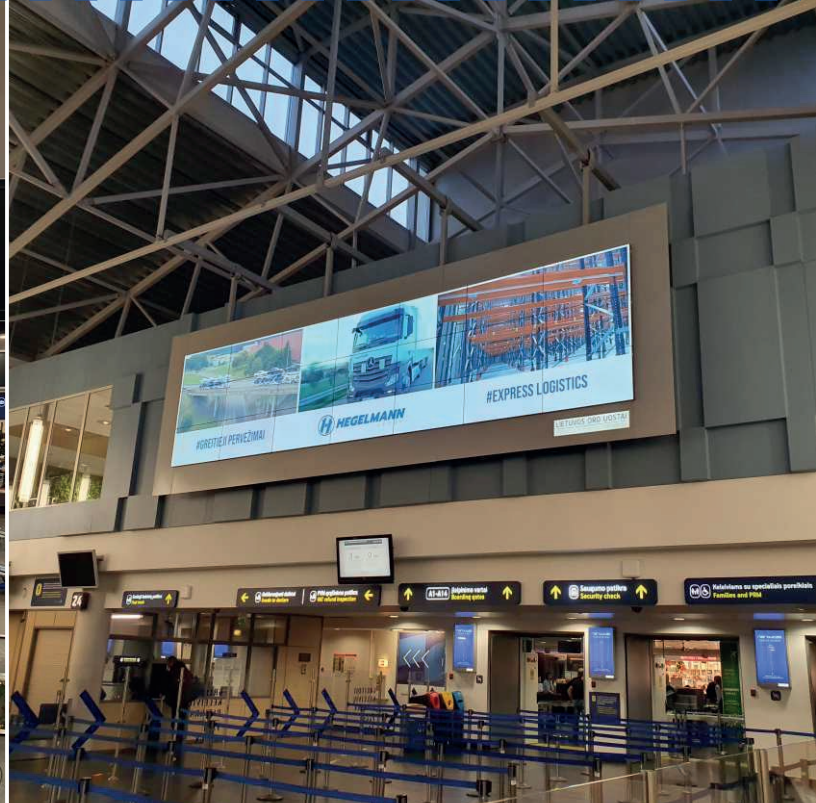
#### Main materials

1	PMMA   Aluminium	4   2 mm
2	PMMA	30 mm









## DIGITAL SIGNAGE SOLUTIONS

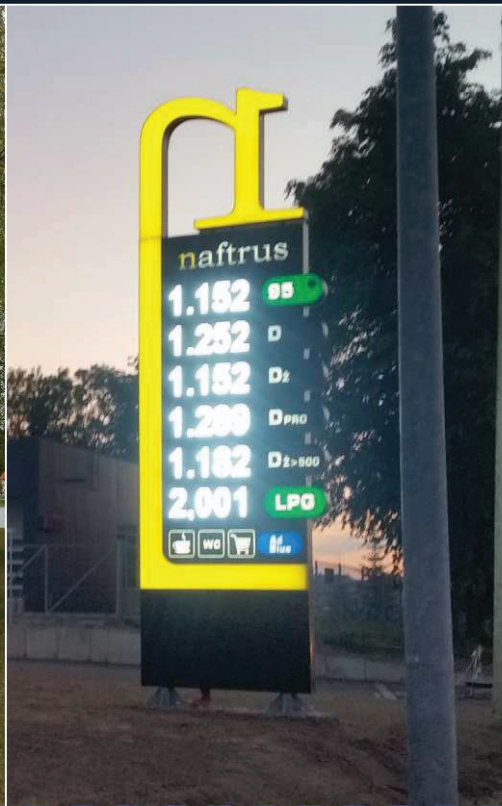
Nowadays customers expect to be engaged and entertained anywhere they go. To meet this need we offer out-of-the-box digital signage solutions, including hardware, software and content templates. They are easy to set-up and use, therefore any business can easily find the right match for almost any purpose.

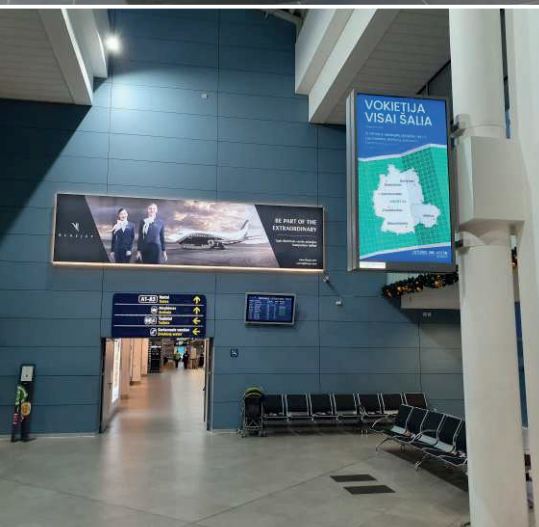
Digital signage solutions like digital menu boards, digital posters, passenger information displays and many others can be applied in corporate communications, fast food restaurants, retail, banking & finance, government institutions, education, transportation, healthcare, automotive, entertainment, hotel & casino, DOOH / outdoor and other industries.



## PROMOTIONAL TOTEMS, FLAGPOLES

In today's business signage norm is to help your visitors and employs access your business premises by the help of pylon business signage. Totem business signage becomes a landmark and part of an urban architecture and helps to orient and reach destination point in a city labyrinth of signs and arrows. Business signage pylons today are not a simple megaliths but a kind eye catching combination of great design and illumination object with colorful prints, integrated led lights informational panels and variation of spotlights. If you care about your business image and prestige don't forget to welcome your clients, guests and visitors with a custom or national flags near your business premises on flagpoles. You just have to decide where exactly it must be installed and our professionals will do their job!









# LUMOSIGNS

Trade Signage Solution

CONTACT:

Phone

UK: +44 (0) 330 8088 054  
EU: +31 (0) 315 711729

Website

[lumosigns.com](http://lumosigns.com)

Email

[sales@lumosigns.com](mailto:sales@lumosigns.com)

✓ ADS led light guide panel  
**64 W**

✗ Fluorescent tubes  
**320 W**

## ENERGY SAVING SOLUTION

Double - sided LED LGP Magnetic Frame – 2450 x 1250 x 16mm 100W  
Single - sided LED light box – 2450 x 1250 x 50mm 260W

## LONG LIFE LED TECHNOLOGY

Samsung LEDs and special aluminum heatsinks extend LED longevity up to 25 000 hours.

✓ ADS led light guide panel  
**+25 000 h**

✗ **+8000 h**



## PRODUCTS

### LGP INFORMATION/DIRECTIONAL SIGNS

LGP technological advantages eliminates barriers between the design and the fabrication process and allow to achieve all aspects in visual identity. Such standard restrictions as color combinations, dimensions, electrical installation are not actual when you are using LGP solutions.

### NON-STANDARD PRODUCTS