

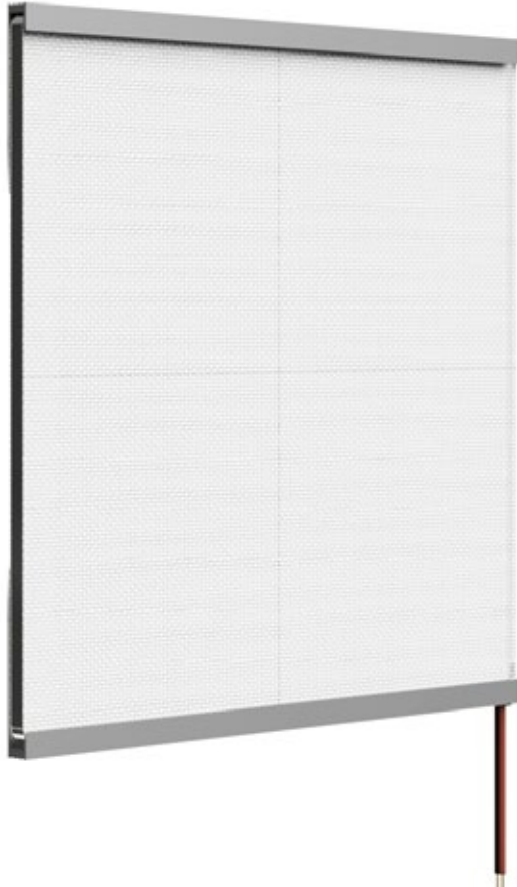


LUMOSIGNS  
Trade Signage Solution

Standard

# Lumo Sheet S

Ultra thin lighting source



**ULTRA THIN & BRIGHT LED PANEL**

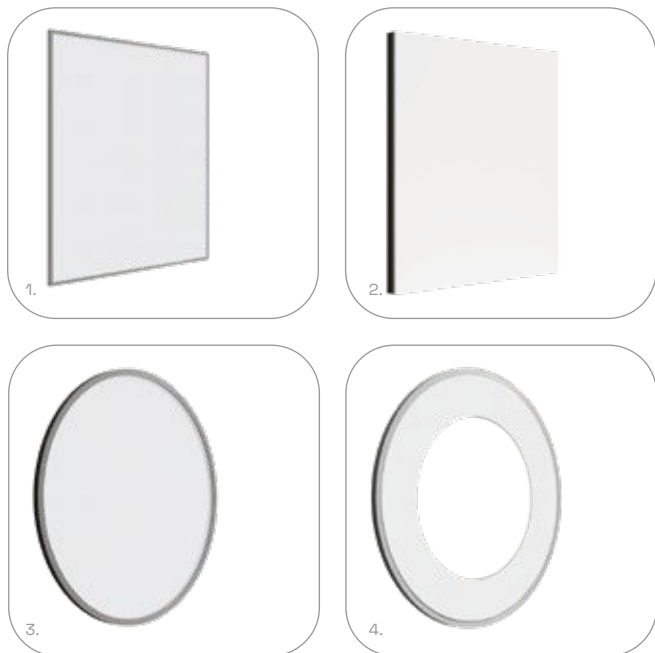
## Lumo Sheet S



- **Frame thickness is just 8 mm**
- **Brightness up to 11000lx on the surface depending on size**
- **Single or double sided, curved and custom shape options**
- **Low power consumption**
- **Wide application possibilities, from interior design to signage**
- **OPAL front cover 2mm, optional**

Ultra-thin led sheet Lumo Sheet S radiates class. The thinnest LED panel in the market is of 8 mm thickness only. These acrylic light panels scatter the light to perfection, making it irresistible to take the eyes off of the lighting solution. Different design options enable custom application. Perfectly simple customization reveals limitless possibilities to emphasize your individuality.

SUPPORT 24/7, PROTECTION & WARRANTY



## VARIATIONS

### 1. Basic (Classic)

Classic Lumo Sheet S, the paper thin led light sheets, remain 8 mm in thickness even with the frame. The minimalistic LED light sheet radiates elegance and style.

### 2. Basic (Milky)

It's the classic Lumo Sheet S with Milky coating that dims the bright light and softens the texture of the acrylic sheet.







### 3. Basic (Custom)

With exceptional precision, we make Lumo Sheet S custom LED sheet panels of various shapes and sizes. The unique product emphasizes your individuality.

### 4. Basic (Special)

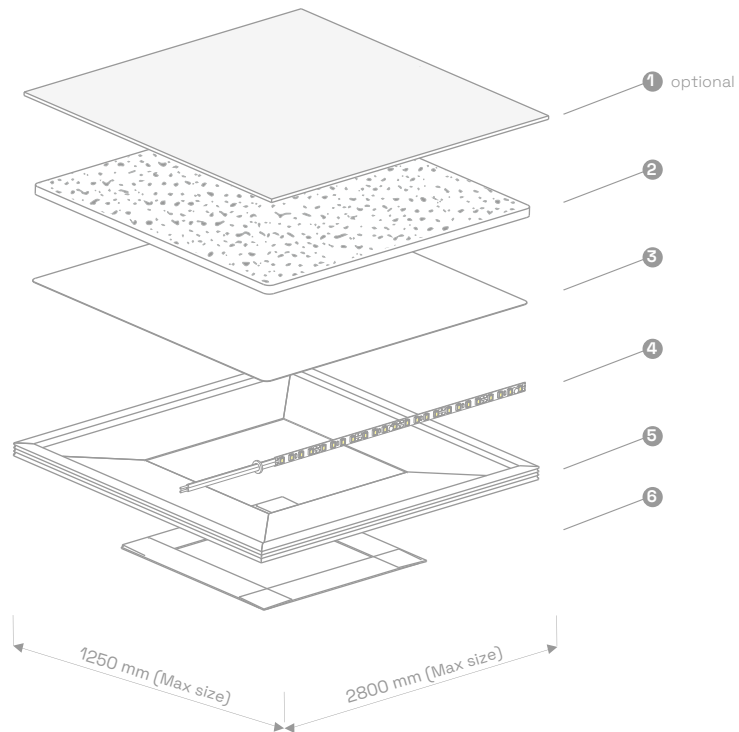
Lumo Sheet S of non-standard dimensions. Each centimeter comprises details that make up the outstanding outline. Perfect for individual business and interior lighting needs.

## Technical specifications

<p>MAIN MATERIAL <b>Clear acrylic (PMMA)</b></p>	<p>LUMINOUS EFFICIENCY <b>up to 160 lm/W</b></p>	<p>POWER SUPPLY <b>DC 12V / 24V / CC Adaptor</b></p>	<p>COLOUR TEMPERATURE</p> <ul style="list-style-type: none"> <li> <b>3000 K</b></li> <li> <b>4000 K</b></li> <li> <b>5000 K</b></li> <li> <b>6500 K</b></li> <li> <b>CCT</b> (Special order)</li> <li> <b>RGB</b> (Special order)</li> </ul>
<p>FRAME THICKNESS <b>8 mm</b></p>	<p>IP RATING <b>IP 20</b></p>	<p>WORKING VOLTAGE <b>DC 12V / DC 24V / DC CC</b> <small>(RGB only 12 V)</small></p>	
<p>MAXIMUM SIZE FROM ONE SHEET <b>2800 x 1250 mm</b></p>	<p>LIFETIME <b>&gt; 50,000 hours</b></p>	<p>INPUT VOLTAGE <b>AC 100 ~ 240V 50/60Hz</b></p>	
<p>MAXIMUM (PROFILE) LENGTHS <b>5000 mm</b></p>	<p>OPERATING TEMPERATURE <b>-30°C ~ + 40°C</b></p>	<p>LED TAPE POWER <b>one-sided 15 W/m</b> <b>two-sided 30 W/m</b></p>	

PACKAGE INCLUDES:

**Power supply (Mean well GST series power supply)**



## PRODUCT STRUCTURE

# Technical & usage

1. Opal Plexiglas (optional)
2. Acrylic sheet
3. Reflector
4. Lumosigns LED tape
5. Aluminium frame
6. Oracal PVC

### Acrylic sheet

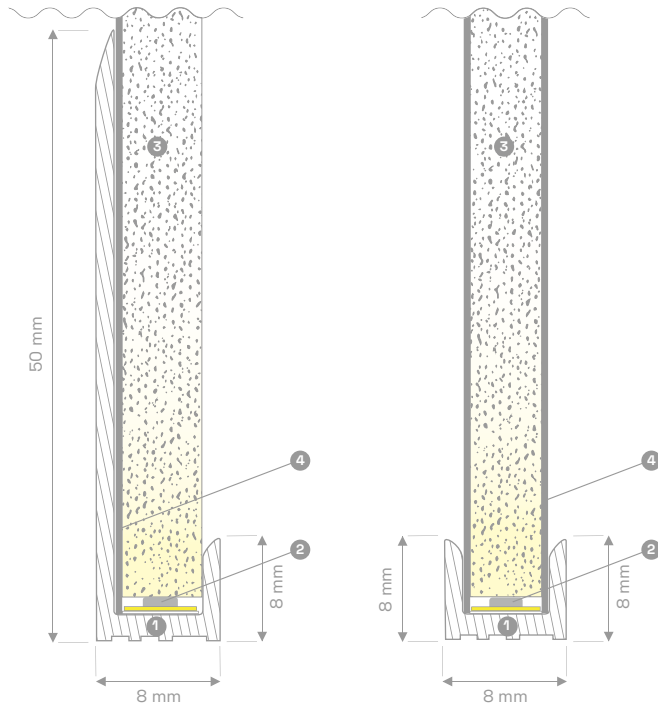
The most important part of the light panel. Acrylic sheet design for even light distribution on the entire surface of the product, leaving no room for hot spots or darker areas you want to light up.

### Reflector

A flexible material designed for supreme light reflection and color enhancement, making the most of LED lighting and acrylic sheet.

### Acrylic sheet

High power LED strips with integrated Intelligent Control (IC) system for ultimate reliability and maximum lighting effect.



Basic Led panel - SINGLE

Basic Led panel - DOUBLE

## PROFILES

# Lumo Sheet S frame components

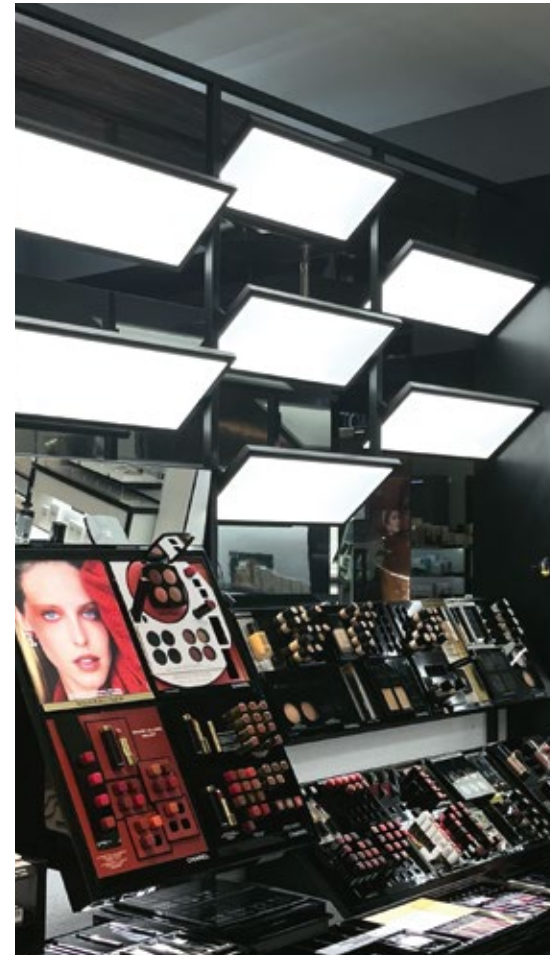
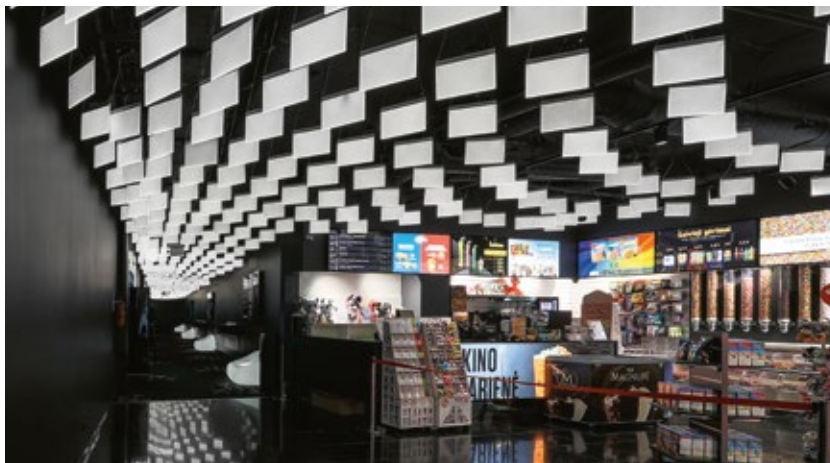
### BASIC LED PANEL - SINGLE

1. Aluminium frame
2. Lumosigns LED tape
3. Acrylic sheet
4. Reflector

### BASIC LED PANEL - DOUBLE

1. Aluminium frame
2. Lumosigns LED tape
3. Acrylic sheet
4. Reflector

## Lighting Projects



We are here to provide you with reliable services.  
Because we are the ones

— who inspire through light

CONTACT:

**Phone**

**UK:** +44 (0) 330 8088 054  
**EU:** +31 (0) 315 711729

**Website**

[lumosigns.com](http://lumosigns.com)

**Email**

[sales@lumosigns.com](mailto:sales@lumosigns.com)