



# Lumo Electro

Electroplated stainless steel signing products

LUMO ELECTRO

# Overview

Strong and durable electroplated stainless steel.

## Features



Scratch resistant



10 metallic finish colours



For indoor and outdoor use



> 8 mm stroke width



Available in stainless steel 304 and 316



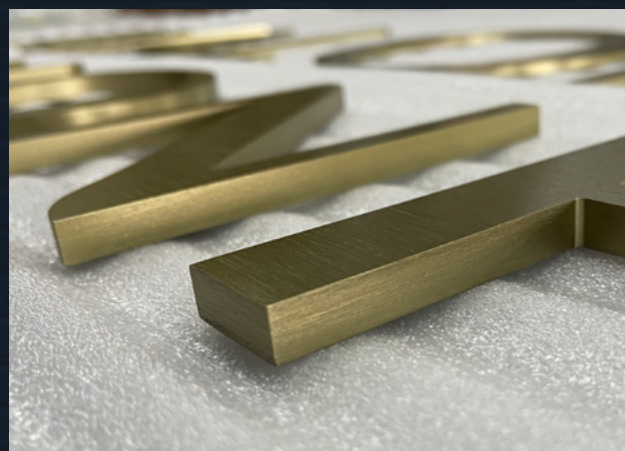
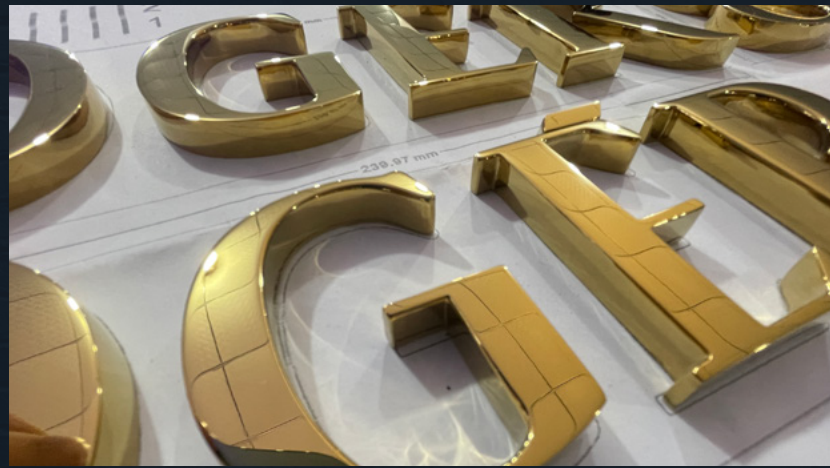
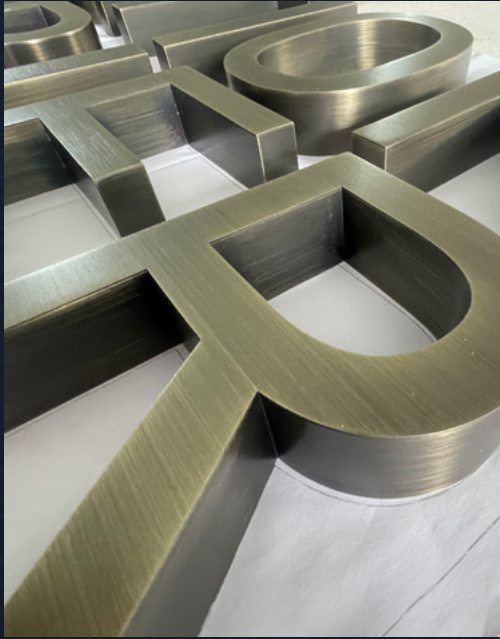
60mm minimum height

## Finishings

Brushed dark rose gold	Matt dark rose gold	Mirror dark rose gold	Brushed black bronze	Matt black bronze	Mirror black bronze
Brushed titanium gold	Matt titanium gold	Mirror titanium gold	Brushed gold	Matt gold	Mirror gold
Brushed champagne	Matt champagne	Mirror champagne	Brushed bronze	Matt bronze	Mirror bronze
Brushed black	Matt black	Mirror black	Brushed red bronze	Matt red bronze	Mirror red bronze
Brushed rose gold	Matt rose gold	Mirror rose gold	Brushed brass bronze	Matt brass bronze	Mirror brass bronze









# Get in touch



+31 (0) 315 711729



+44 (0) 330 8088 054

## Email Us

sales@lumosigns.com

## Visit our website

lumosigns.com