

# LUMOSHEET STANDARD



5 YEARS WARRANTY



## Features

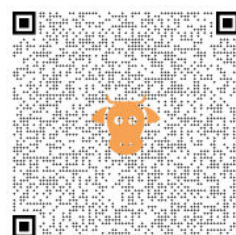
- Thickness is just 5mm (8 mm with heat sink)
- Brightness up to 11000lx
- Single or double sided, curved and custom shape options
- Low power consumption
- Wide application possibilities, from interior design to signage
- OPAL front cover 2mm, optional

## Applications

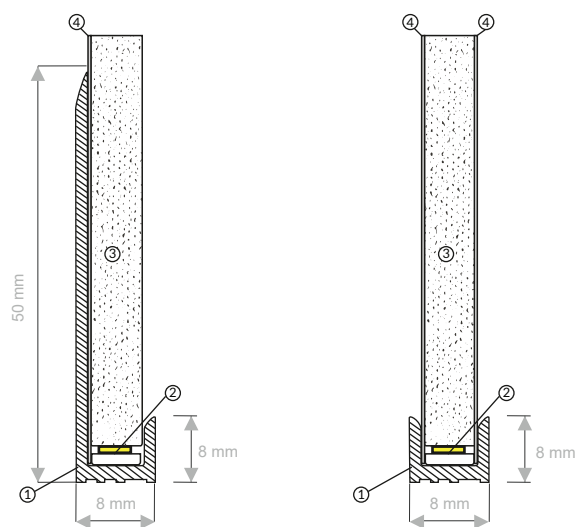
POS Display lighting  
Signage lighting  
Advertising design lighting  
Trade fairs lighting  
Retail lighting  
Interior design lighting  
Hotels lighting  
Wayfinding lighting

## Technical specifications

|                                |                                |
|--------------------------------|--------------------------------|
| Product name                   | Lumo Sheet S                   |
| Main material                  | Clear acrylic (PMMA)           |
| Luminous efficiency            | up to 160lm/W                  |
| Colour temperature             | 3000K 4000K 5000K 6500 K       |
| IP rating                      | IP 20                          |
| Maximum size                   | 2450x1250 mm                   |
| Lifetime                       | > 50,000 hours                 |
| Operating temperature          | Opating temperature            |
| Power supply                   | AC / DC 12V / 24V / CC Adaptor |
| Working voltage                | DC 12V / DC 24V / DC CC        |
| Input voltage                  | AC 100 ~ 240V 50/60Hz          |
| Melt flow index                | 1.0g/10min                     |
| Tensile strength               | 740kg/cm <sup>2</sup>          |
| Tensile elongation             | 6%                             |
| Flexular modulus               | 34kg/cm <sup>2</sup>           |
| Flexular strength              | 1200kg/cm <sup>2</sup>         |
| Izod impact strength (notched) | 1.8kg*cm/cm                    |
| Rockwell hardness              | 98 M scale                     |
| Heat distortion temperature    | 95C                            |
| Specific gravity               | 1.19                           |
| Light transmission             | 93%                            |
| Haze                           | 0.1%                           |



## Technical drawing



## Other picture

## Single

1. Frame basic
2. LED bar
3. Acrylic sheet
4. Reflector

## Double

1. Frame basic
2. LED bar
3. Acrylic sheet
4. Diffuser

